

INSTALLATION INSTRUCTIONS FOR LINEAR LIGHTS

PRODUCT IDENTIFICATION

Determine the mount type of your linear light

- **Adhesive** - Full length or intermittent adhesive attached to the bottom of the extrusion profile.
- **Clips** - Short-length press-in clips, mounted with fasteners, that allow routing of a light in a non-linear fashion.
- **Channel** - Full length rigid or semi-rigid channel, mounted with fasteners, available with adhesive backing for temporary hold. Some channel products come with finishing tips which contain a fastener location or pre-drilled support holes inside of the channel for fasteners. Other channels must be pre-drilled prior to fastening to the mount surface.

Adhesive Mounting Instructions

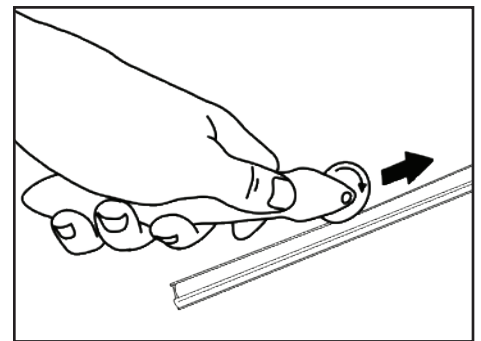
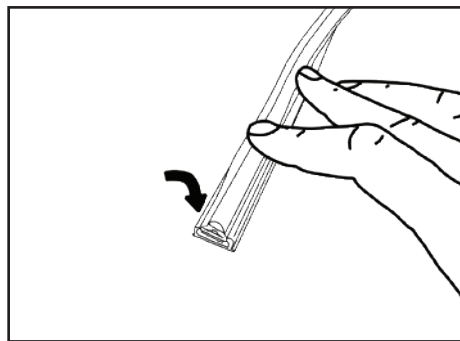
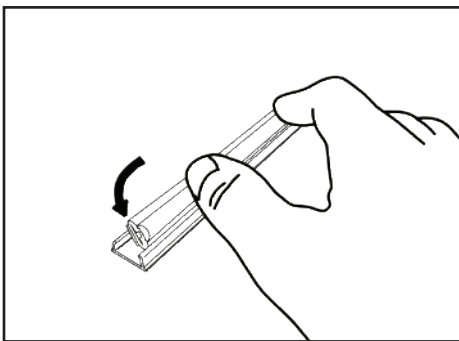
- Prep the mounting surface with isopropyl alcohol and use an adhesive promoter (not included) if possible
- Peel away the adhesive backer. For longer runs, remove the backer in small sections so the light can be installed without accidental adhesion. Make sure that the minimum bend radius on any linear lights is not exceeded.
- After initial adhesion, apply pressure evenly throughout the adhered surface for 30 seconds. Allow 24 hours of cure time.

Clip Mounting Instructions

- Mark mounting holes and clip locations. When setting up clip locations for lights in a non-linear fashion, make sure the clip locations will not product a bend radius smaller than the minimum bend radius of the product. Exceeding the bend radius will void warranty.
- Pre drill holes for the clips and locate them along the mounting surface and secure with fasteners.
- After clips are mounted, route the light extrusion through the clips by pressing until the fastening mechanism of the clip is engaged.

Channel Mounting Instructions

- If the channel has adhesive backing follow the preparation instructions for adhesives above.
- If the channel has finishing tips, make sure the full assembly will fit in the mounting location.
- Channel should only be mounted on a flat surface.
- Remove the light extrusion from the channel if already assembled. If holes are not already predrilled into the channel, locate and drill mounting holes every 9".
- If the channel has adhesive, follow steps 2 and 3 of the Adhesive Mounting Instructions above. This is intended to be a temporary adhesion.
- Apply fasteners into the pre-drilled holes inside of the the channel for permanent fixturing. Do not install fasteners in holes located near the end of the channel if they are needed for wire routing or finishing tips.
- Make sure that wires are routed straight and are not rubbing against any sharp edges on the drilled holes.
- Press or slide the light extrusion into the channel.
- **If pressing the extrusion into a channel (see images below):**
 1. Tuck one edge of the extrusion into the side of the channel
 2. Starting at one end, use your fingers to gently press the other side of the extrusion into the channel until it snaps in place
 3. Use a screen spline roller or similar tool to apply even pressure to the extrusion and roll it down the remaining length, pressing the untucked side of the extrusion into the channel. Do not use sharp tools to press on the light or it will cause damage to the extrusion and void warranty.
- Apply finishing tips to channel (if applicable), routing wires through if necessary.

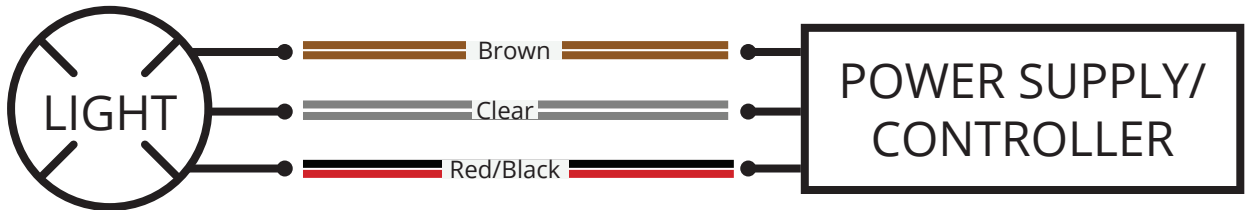


Vista reserves the right to modify this specification without prior notice.

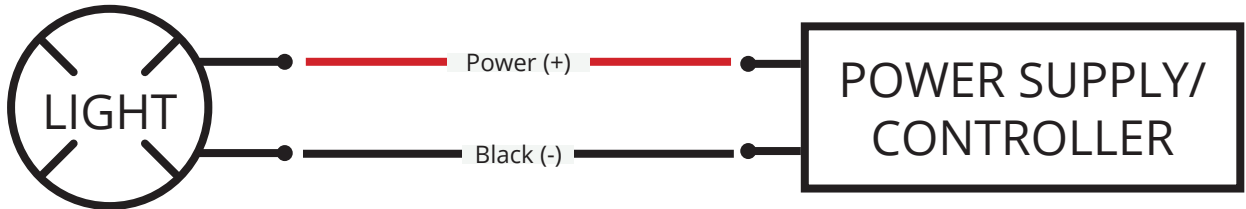
WIRING:

Route wire as necessary for the application. Do not pinch or puncture wires with fasteners. Do not route wires around sharp edges. A wire loom should be used for protection if wires are to be routed through areas where they may encounter sharp edges, in an application that would experience high amounts of vibration, in areas that may have fasteners protruding into them during later assembly, or other extreme conditions. Standard wiring outputs can be seen below.

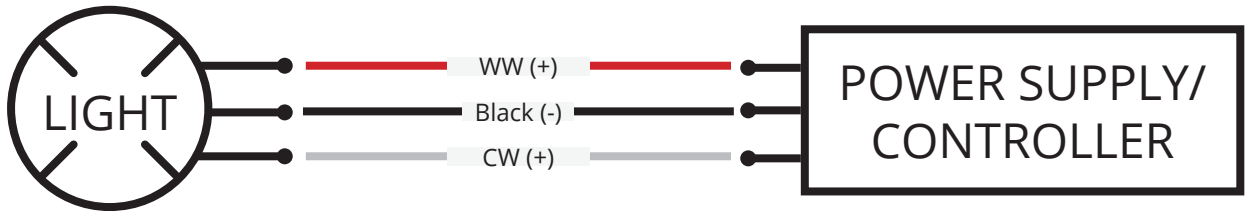
INCANDESCENT LIGHTS - (DO NOT HAVE A DEFINED POWER AND GROUND)



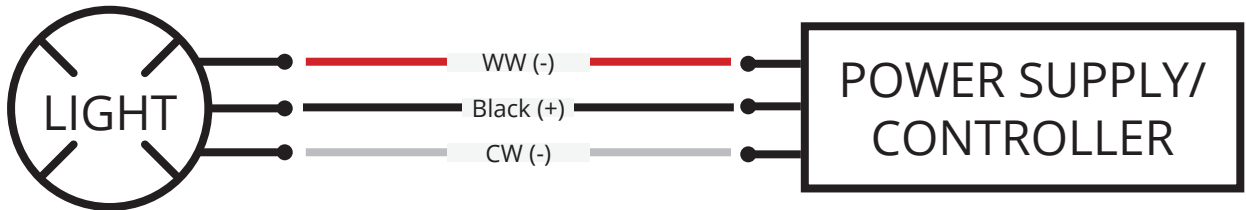
SINGLE COLOR LIGHTS



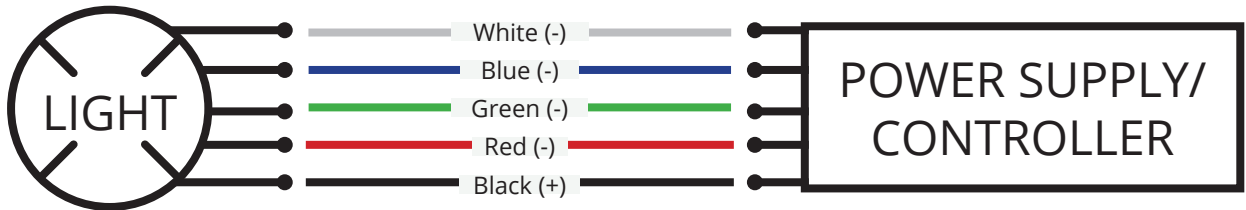
TUNABLE LIGHTS (COMMON GROUND)



TUNABLE LIGHTS (COMMON POWER)



RGB/W LIGHTS (RED, GREEN, BLUE, WHITE) - COMMON POWER



DISCONNECT POWER SOURCE (BATTERY) BEFORE STARTING ELECTRICAL WORK.

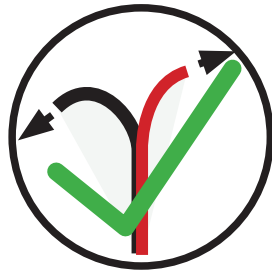
Recommended methods for splicing wires together (parts not included in Vista product kits):

- Solder and cover bare wires with heat shrink or electrical tape.
- Insulation-displacement connector (IDC) / insulation-piercing contact (IPC).
- Twist on wire connector, "wire nut".
- Crimp connector, "Butt splice".

Vista reserves the right to modify this specification without prior notice.

WARNING:

1. Supply current and wattage must not exceed the rated values on the specification documents.
2. Incorrect polarity or improper wiring may cause personal injury and/or damage to the product. It is recommended that an electrical technician, professional, or similarly qualified individual finish wiring.
3. To avoid electrical shock risk, all failures should be examined by a qualified technician.
4. Environmental suitability, including but not limited to water resistance, varies based on product design. Unless explicitly noted, products are to be installed in a location shielded from outdoor elements. To avoid irreparable damage, refer to specification sheets to locate products in a proper environment.
5. Do not install products near an open flame or in high temperature environments unless the product is explicitly designed to function as such. Adversely, do not install products in excessively cold environments unless explicitly designed to function as such. Refer to product spec sheets/drawings for information about minimum and maximum operating temperatures.
6. Vista Manufacturing, Inc. is not liable for any injuries or damage caused due to improper wiring or installation.
7. Only use the provided power supply or a Class 2 equivalent when wiring lights.
8. The listed IP Rating on products applies to the lighted assembly and installed connectors. If a product has an open wire to allow for hardwiring or installing aftermarket connectors, assume the IP rating at the open wire point is no higher than IP20.
9. Do not use cutting tools such as wire cutters, scissors, or shears to separate wire. Wires should be pulled apart in shear, perpendicular to the flat plane of the wire ribbon, and not in tension.



Vista reserves the right to modify this specification without prior notice.
