



4-Zone Wall Remote (Slider)

Install Instructions

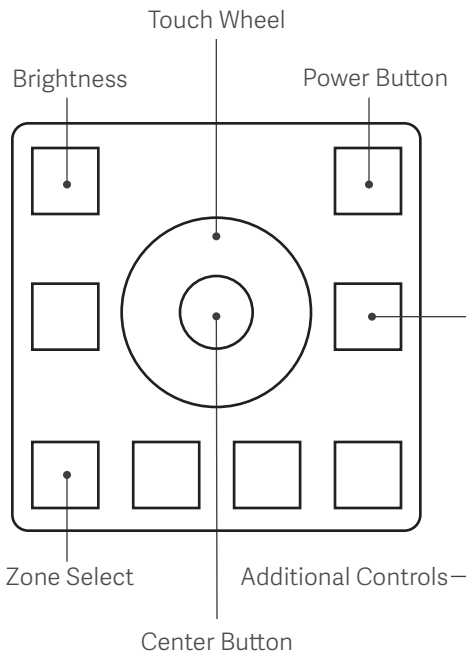
For Your Safety:

- Disconnect power source before starting electrical work
- Read all safety notes before installing the product
- When installing or replacing battery, install in the correct orientation

Precautions:

- If the remote will not be used for a long time, remove the battery to remove risk of damage
- Do not install behind or within a metal object.
- For use indoors and in dry locations only

Control Diagram



DIM (1 Channel)	SCENE CONTROL (2) - Short Press: Recall scene Long Press: Save current state
CCT (2 Channel)	SCENE CONTROL (2) - Short Press: Recall scene Long Press: Save current state
RGBW (3/4 Channel)	MODE - Short Press: Select and play built-in dynamic mode; Long Press: Cycles all dynamic modes SPEED - Adjusts dynamic mode speed CENTER - Short Press: White Channel ON/OFF; Long Press: White DIM
RGBCCT (5 Channel)	MODE - Short Press: Select and play built-in dynamic mode; Long Press: Cycles all dynamic modes SPEED - Adjusts dynamic mode speed CENTER - Short Press: Switch between RGB and CCT Slider control

Common Controls

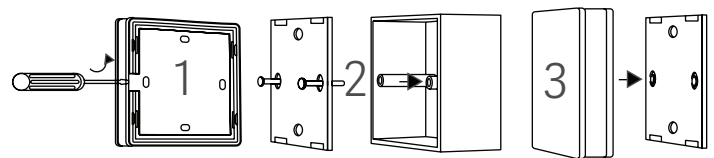
- POWER** - Short Press: ON/OFF all zones
- TOUCH WHEEL** - Touch to change brightness, color temperature, or color
- BRIGHTNESS** - Short Press: 10 level increments
- ZONE SELECT** - Short Press: Selects zone and turns ON; Long Press: Zone OFF.
Short press multiple zones in sequence to sync control across zones

When all lights are off, Long Press Power key for 5s to deactivate touch tone

Installing the Remote

Use magnetic backplate and mount directly to metal surface, **OR**

1. Use a flat screwdriver to remove the baseplate
2. Screw the baseplate into a wall or compatible outlet box
3. Press the touch panel assembly onto the baseplate



Pairing the Remote Control

Use the Controller's Match Button

Match:

- Short press the Match button on the controller, then immediately press the Zone button on the remote. The LED will flash three times if the match is successful.

Delete:

- Press and hold Match button for 5 seconds to delete all matched remotes. The LED will flash three times if the matched remotes were deleted.

Use Power Restart

Match:

- Rapidly switch power to the Controller on and off two times.. Immediately short press the Zone button. The light will blink 3 times if the match is successful.

Delete:

- Rapidly switch power to the Controller on and off two times. Immediately short press the Zone button 5 times on the remote. The light will blink three times if the matched remotes were deleted.

Vista reserves the right to modify this specification without prior notice.

