

1-Zone Wall Remote (Dial)

Install Instructions

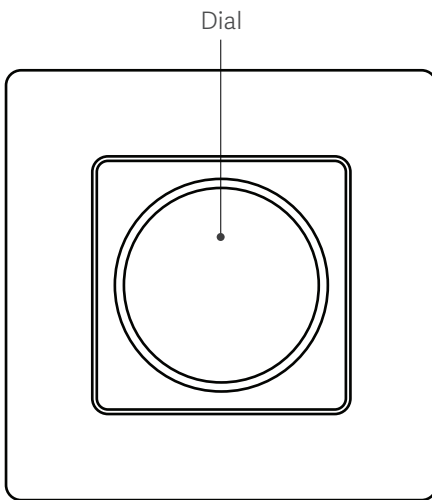
For Your Safety:

- Disconnect power source before starting electrical work
- Read all safety notes before installing the product
- When installing or replacing battery, install in the correct orientation

Precautions:

- If the remote will not be used for a long time, remove the battery to remove risk of damage
- Do not install behind or within a metal object.
- For use indoors and in dry locations only

Control Diagram

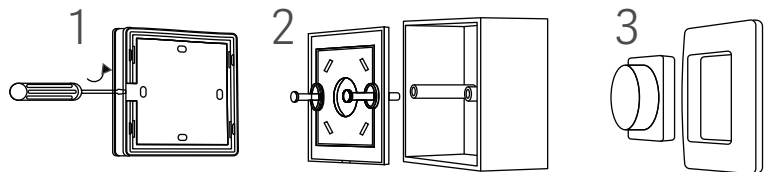


DIM (1 Channel)	SHORT PRESS	ON/OFF
	ROTATE	Adjust Brightness
	LONG PRESS	Continuous Brightness Adjustment
CCT (2 Channel)	SHORT PRESS	ON/OFF
	ROTATE	Change color temperature or brightness
	DOUBLE PRESS	Switch between dimming and temperature control
	LONG PRESS	Continuous Brightness Adjustment
RGBW (3 Channel)	SHORT PRESS	ON/OFF
	ROTATE	Change RGB Color (60 Colors) or Brightness (50 levels)
	DOUBLE PRESS	Switch between dimming and RGB color control
	LONG PRESS	Continuous Brightness Adjustment

Installing the Remote

Use magnetic dial and mount directly to metal surface, **OR**

1. Use a flat screwdriver to remove the baseplate
2. Screw the baseplate into a wall or compatible outlet box
3. Press the Dial housing assembly onto the baseplate and snap the magnetic dial into the housing



Pairing the Remote Control

Use the Controller's Match Button

Match:

- Short press the Match button on the controller, then immediately press the Dial on the remote. The LED will flash three times if the match is successful.

Delete:

- Press and hold Match button for 5 seconds to delete all matched remotes. The LED will flash three times if the matched remotes were deleted.

Use Power Restart

Match:

- Rapidly switch power to the Controller on and off two times.. Immediately short press the Dial. The light will blink 3 times if the match is successful.

Delete:

- Rapidly switch power to the Controller on and off two times. Immediately short press the Dial 5 times on the remote. The light will blink three times if the matched remotes were deleted.

Vista reserves the right to modify this specification without prior notice.